

# A & L Electric Sales

Tomorrows lighting for a Greener Planet

## Vapor Tite 2'

### For Wet and Damp Locations

#### Description

V&J Lighting Fixture offers the finest manufactured Gasketed Enclosures, which are totally dust and moisture resistant. The enclosure is constructed of a fiberglass upper body and an acrylic, crepe pattern diffuser securely positioned in a permanent poured in place sealing gasket. The diffuser and upper components are locked into place by retaining latches, assuring a secure, tight seal.

The Gasketed Enclosure is a U.L. recognized component, certified by the NSF International and has the CSA Component acceptance mark.

By installing a U.L. listed fluorescent strip light or channel type lighting fixture into the Sentry Series Gasketed Enclosure and submitting the entire unit to Underwriters Laboratories, a U.L. Listed fixture suitable for use in wet or damp locations can be realized.

#### Approvals and/or Listings

Underwriters Laboratories  
NSF International  
U.S. Department of Agriculture  
Canadian Standards Association

#### Features:

##### STRUCTURALLY RIGID FIBERGLASS BODY

Fiberglass is reinforced polyester and self-extinguishing (ASTM D635-74). This type of construction does not allow the body to flex during handling and installation.

##### GASKETED DIFFUSER RETENTION SLOT

The gasketed inverted U-slot provides a positive continuous seal between body and diffuser.

##### BRASS FIXTURE MOUNTING STUD

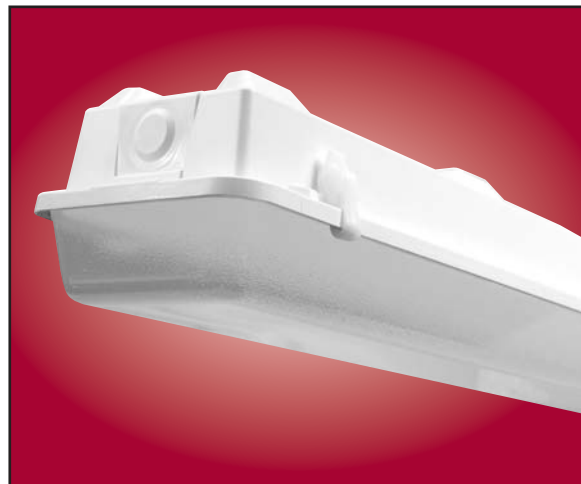
The fixture studs are integrally molded into the body to facilitate lighting fixture installation.

##### HIGH IMPACT ACRYLIC/DR DIFFUSER

Internal crepe pattern allows a smooth exterior surface for ease of cleaning.

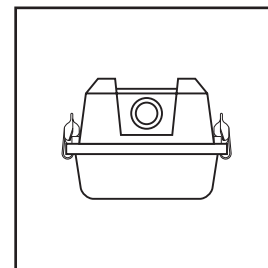
##### DIFFUSER

The diffuser flange fits snugly into the gasketed retention slot forming a continuous seal.



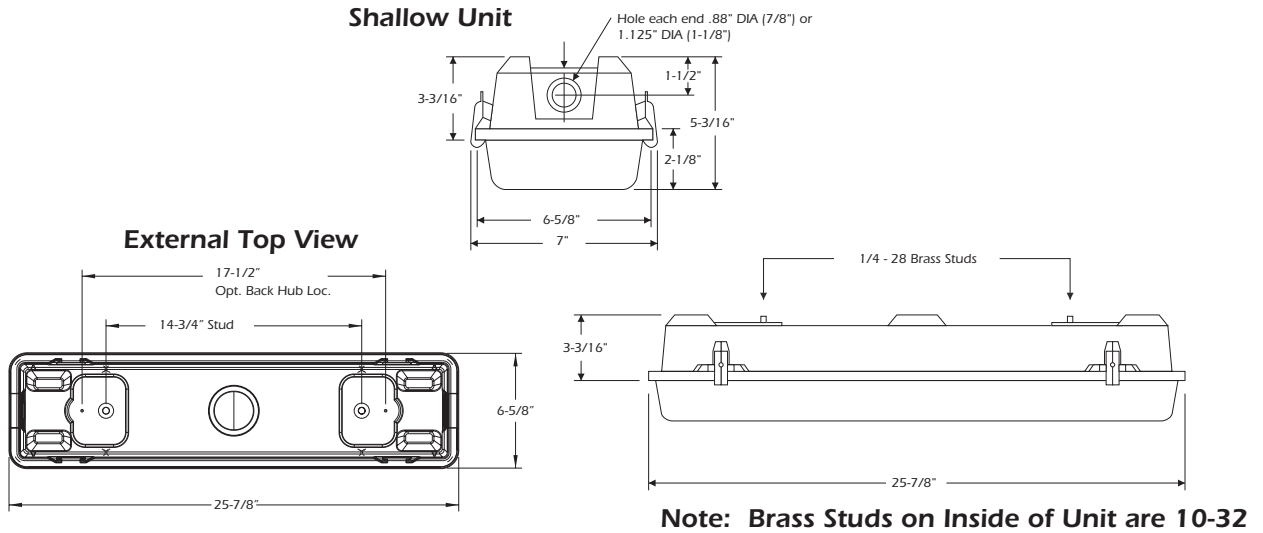
#### Applications

Food Processing Facilities  
Kitchens  
Parking Garages  
Car Washes  
Schools  
Government Facilities  
Industrial Facilities  
Public Areas



# 2 Foot Enclosure

## Shallow Unit



Catalog No.	Lamps	Voltage	Length	Type
F-VT117	1 T8	120V-277V	24"	Bi-pin Shunted
F-VT217	2 T8	120V-277V	24"	Bi-pin Shunted
F-VT217-EMG	2 T8 (Emergency)	120V-277V	24"	Bi-pin Shunted