

A & L Electric Sales

Tomorrows lighting for a Greener Planet

Specialty Fuse Fast-Acting, Non-Rejecting

GLR & HLR



Catalog Symbol: GLR (Fuse) HLR (Fuseholder)

Fast-Acting, Non-Rejection Style Fuse

Ampere Rating: $\frac{3}{16}$ -15 Amperes

Voltage Rating: 300 Volts AC or less

Interrupting Rating: 10,000 Amperes

Agency Information:

GLR Fuse:

UL Listed, Std. 248-14

$\frac{3}{16}$ -15A/300 Vac, Guide JDYX, File E19180

CSA Certified, C22.2 No. 248.14, 0-10A/300 Vac

Class 1422-01, File 53787

HLR Fuseholder:

UL Recognized, 12A, 300 Vac, Guide IZLT2, File E14853

CSA Certified, 12A, 300 Vac, Class 6225-01, File 47235

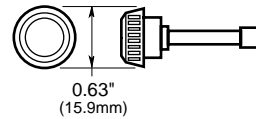
HLR-2A:

UL Recognized, 15A, 300 Vac, Guide IZLT2, File E14853

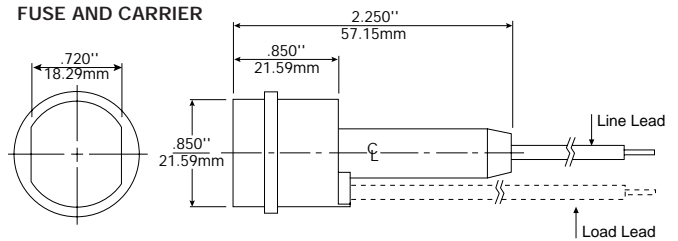
CSA Certified, 15A, 300 Vac, Class 6225-01, File 47235

Dimensional Data

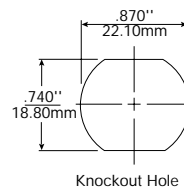
FUSE



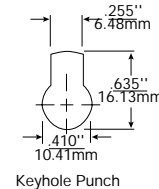
FUSE AND CARRIER



MOUNTING HOLE



Knockout Hole



Keyhole Punch

Catalog No.	Description
FUSE1-1/2	1.5 Amp Fuse
FUSE2	2 Amp Fuse
FUSE3	3 Amp Fuse
FUSE5	5 Amp Fuse
FUSE7	7 Amp Fuse
FUSE10	10 Amp Fuse
FUSEHOLDER1	1 Wire Fuse Holder
FUSEHOLDER2	2 Wire Fuse Holder

- HLR carrier comes with 6" of #18 red insulated solid copper wire attached to the line side.
- Customer inserts a #18 insulated solid copper wire into load side receptacle.

- An alternative to the HLR fuseholder is the A fuseholder. The A fuseholder comes WITHOUT leads. The customer inserts #18 insulated solid copper wire into the line side receptacle as well as into the load side receptacle. It has the same body dimensions, utilizes the same mounting hole, and takes the same mounting clips as the HLR. The A fuseholder is UL Recognized, 10A, 300Vac, Guide IZLT2, File E14853 and CSA Certified, 10A, 300Vac, Class 6225-01, File 47235.
- Fuse and knob are an integral one-piece unit. There are no replacement knobs (caps).